



IRASCIBLE MUSIC
www.irascible.ch

NADINE SHAH (UK)

«Fast Food» (Apollo/ R&S Records, VÖ: 03.04.2015)



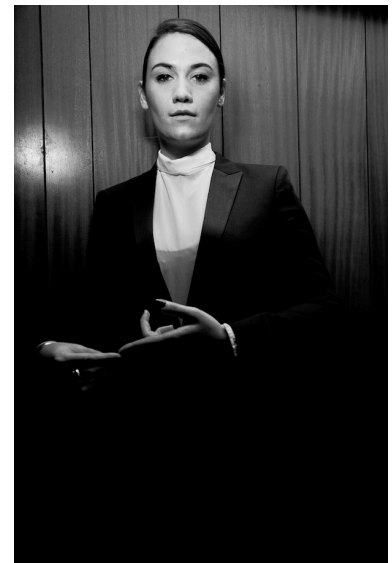
Having earned an early reputation for that uniquely rich, soulful voice; Nadine Shah released her debut album «Love Your Dum and Mad» to critical acclaim in 2013. A stint on the road with *Depeche Mode* followed whilst opening for *Bat for Lashes* and playing live at *Vivienne Westwood's Red Label London Fashion Week* show provided notable highlights on an extensive tour. Created with trusted collaborator and producer Ben Hillier, the excellent follow-up «Fast Food» is out on 3 April via Apollo / R&S Records.

Born from a fervent two-month writing session, «*Fast Food*» exists on a knife-edge – every bit as dramatic as we've come to expect from Nadine but with a sharpened eye for all things hook laden; retaining a brooding grandeur in its movements. Recorded live at Ben's studio **The Pool** in South London, the album features contributions from guitarist **Nick Webb** and bassist **Pete Jobson** (of *I Am Kloot* fame).

Building on the bruised honesty and charm of its predecessor, «*Fast Food*» rings with the confidence of an artist completing their most coherent musical chapter to date. "The last album took so long to make that by the time it came out it didn't feel like it was a very clear representation of where I was musically, but this time it's different," Nadine explains. «*Fast Food*» is a more concentrated effort: it is the sound of Nadine Shah as she is now, stepping out from behind the piano and growing with immeasurable confidence.

Nadine admits that «*Fast Food*» is a reflection upon short lived, intense, complicated relationships. "I suppose it's a coming of age album of sorts lyrically. Rejecting the romanticised idea of 'perfect' love and maturing in respects to relationships and accepting partners pasts". With love comes heartbreak: "But it isn't begging for your sympathy, it doesn't wallow in self-pity" adds Nadine. "It's unapologetic and, I hope, empowering."

Setting the pace with this beguiling and exhilarating listen, «*Fast Food*» cements Nadine Shah as one of the UK's most exciting and enthralling talents. Whether it's the brutal honesty of the love stories, the brooding, crystalline guitars or even the rich, soulful vibrancy of her voice, «*Fast Food*» is an immediate, lavish and wholly vital album for 2015.



For Fans of : **Bat for Lashes, Kyla La Grange, Mirel Wagner**

Members: **Nadine Shah**

www.nadineshah.co.uk

IRASCIBLE MUSIC

Place du Nord 7, 1005 Lausanne
Geroldstrasse 33, 8005 Zürich
www.irascible.ch

Promotion
Cristina Vega
cristina@irascible.ch
044 271 32 83 / 84